

Description	Specification		
	Selective paint coating	Black Chrome	Selective blue Megnetron puttering
Dimension (mm)	2000*1000*82mm		
Header Tube	Copper Ø22 / Ø25mm		
Riser Tube	Copper Ø10mm		
Absorber Fin	Copper Fin / Aluminum Fin , Ultrasonic Welding		
Absorber Coating	Selective Paint Coating	Black Chrome	Megnetron Sputtering (Tinox, Germany)
Optical performance	Absorbance $a \approx 96\% \pm 2\%$ $e \approx 18\% \pm 2\%$	Absorbance $a \approx 95\% \pm 2\%$ $e \approx 12\% \pm 2\%$	Absorbance $a \approx 94\% \pm 2\%$ $e \approx 4\% \pm 2\%$
Glass Cover	4mm Tempered Glass, Transmittance $\geq 87\%$	4mm Low Iron Tempered Glass, Transmittance $\geq 91\%$	4mm Patterned Low Iron Tempered Glass, Transmittance $\geq 92\%$
Frame Material	Aluminum Alloy		
Frame Color	Bronze		
Insulation	Fibreglass / PEF / PU		
Back Plate	Galvanized Plate / Aluminum Plate		
Gross Area	2 m ²		
Aperture Area	≈ 1.85 m ²		
Sealing Profile	EPDM Sealing Stripe		

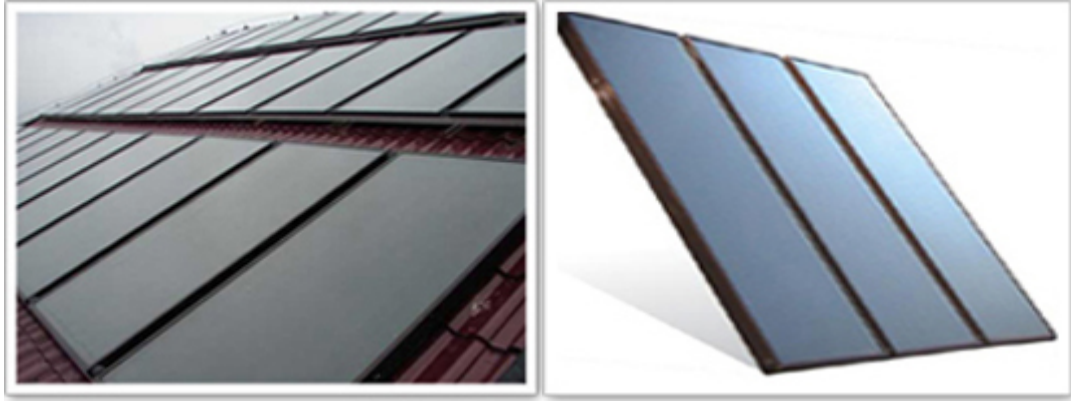
Features:

- high efficiency solar collector, supply hot water or space heating for domestic and commercial applications
- Reliable, efficient, environment-friendly and energy-free from the solar energy, save your money
- Red copper heat absorber, whose thermal conductivity is several times that of aluminum or stainless steel
- PEF or PU thermal insulation ensures good heating performance and minimal heat loss
- Unique panel structure, faster heat transfer speed, not easy to accumulate dirt
- Outstanding antifreeze performance, working normally in winter
- Manifold cover's material: stainless steel or galvanized sheet
- Aluminum alloy frame and special tempered glass, luxurious taste
- Easy installation, integrated with building constructions
- Can be connected into series to increase hot water capacity

Specifications:

- Dimension(L*W*T mm):
 - L(mm): 1500~2400
 - W(mm): 800~1250
 - T(mm): 75~95
- Fin & Tube: Red Copper, Red Copper-aluminum. Ultrasonic Welding
- Coating: Magnetron Sputtering, Black Chrome, Selective Coating
- Cover : Low Iron Tempered glass, Patterned Tempered Glass
- Cover Thickness: 4mm
- Insulation Material: PEF, PU, Fiber Glass
- Frame Material: Aluminum Alloy
- Sealing Material: High quality EPDM
- Highest Operation Pressure: 0.8Mpa-1.6Mpa
- Recommended Circulation Material: Water/Antifreeze
- Antifreeze Temperature: above -33 °C (use antifreeze)

Customised services are welcomed



JT Flat Plate Solar Water Heater